

NEW

Stainless Steel 700 Series Worm Gear Speed Reducers



“Boston Gear’s unmatched product performance in highly caustic washdown applications combined with their first class customer service makes them our first choice for speed reducers.”

Eric Napientek
General Manager,
OSI Products

**SAME DAY
GUARANTEED
SHIPMENT**

The NEW Boston Gear 700 Series Stainless Steel Speed Reducer is designed to provide maximum corrosion resistance in caustic washdown environments.

Boston Gear 700 Series worm gear speed reducers have been a mainstay in industrial applications for decades.

This proven worm gear speed reducer technology has been imitated by many competitors for years. As the leading innovator of this technology, Boston Gear continues to improve product performance by developing innovative features and designs to meet changing market demands.

Increasingly stringent demands and the anticipated tightening of federal regulations in the food processing and beverage industries has driven Boston Gear to introduce a new line of Stainless Steel worm gear speed reducers to help prevent microbial contamination and bacterial growth in highly caustic washdown environments.

- 316 Stainless Steel housing, motor flange and carrier to withstand tough washdown environments
- 303 Stainless Steel output shafts
- Center Distances: 1.75", 2.06", 2.62", & 3.25"
- Ratios: 5, 10, 15, 20, 25, 30, 40, 50, 60
- Standard input for NEMA 56C and 140TC / 180C motors
- Sealed for Life! Lubricated with H1 food grade lubricant (klubersynth UH1 6-460)
- Utilizes the trusted standard 700 Series worm gearing
- All critical dimensions are the same as standard 700 Series
- Available in hollow and solid output shafts
- Laser marked nameplate
- NSF (National Sanitation Foundation) Certified

Need your stainless steel reducer fast? Order today and receive it tomorrow!

Reducer Express™ is the premier delivery service option for those customers needing it fast. If any Boston Gear 700 Series is ordered using Reducer Express, we guarantee same day shipment by air if the order is received by noon EST; or next business day air if the order is received after noon. Reducer Express makes getting what you need when you need it a reality, not a fantasy.

www.bostongearss700.com

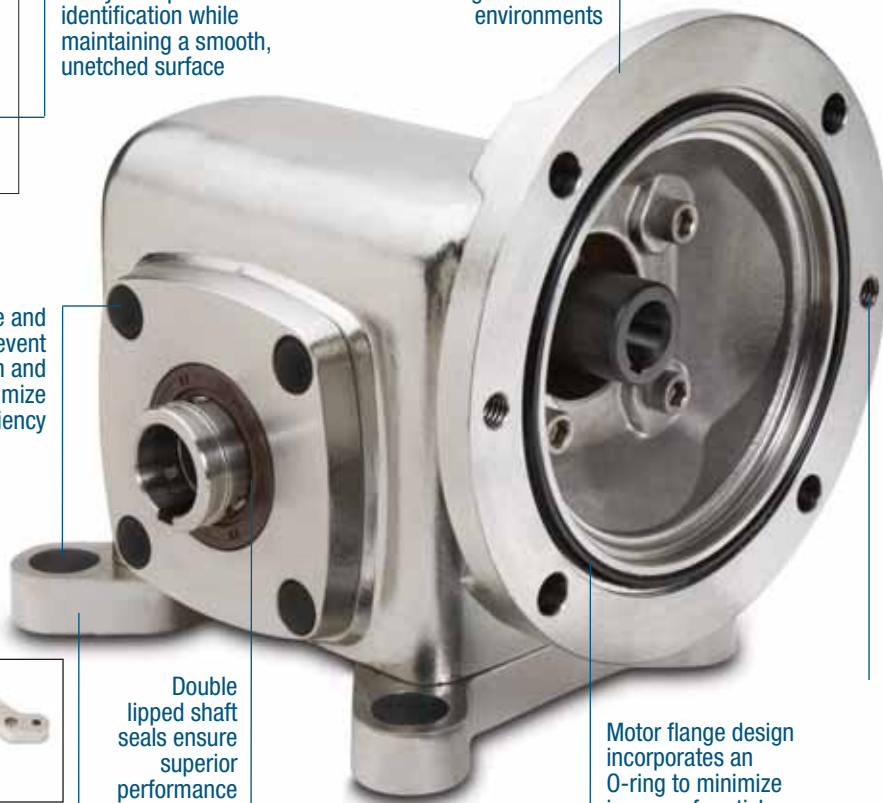
Utilizing the trusted 700 series worm gearing combined with new exterior designs, the new stainless steel 700 series' performance has been optimized to withstand the harshest caustic conditions!

Today, it seems like every manufacturer has a stainless steel version of their worm gear product. Most would like you to believe they are the same. Not true...see what separates the "men from the boys"... features that provide smooth, uninterrupted surfaces to prevent foreign matter adherence and fluid accumulation on the gearbox.



Laser marked nameplate provides worry-free part identification while maintaining a smooth, unetched surface

316 Stainless Steel housing, motor flange and carrier to withstand tough washdown environments



Covers for all hardware and counter bored holes prevent particle accumulation and pooling fluids to optimize washdown efficiency



Flange features (2) jackbolt holes for easy motor/reducer un-mating

Double lipped shaft seals ensure superior performance and leak resistance



Motor flange design incorporates an O-ring to minimize ingress of particles or fluids

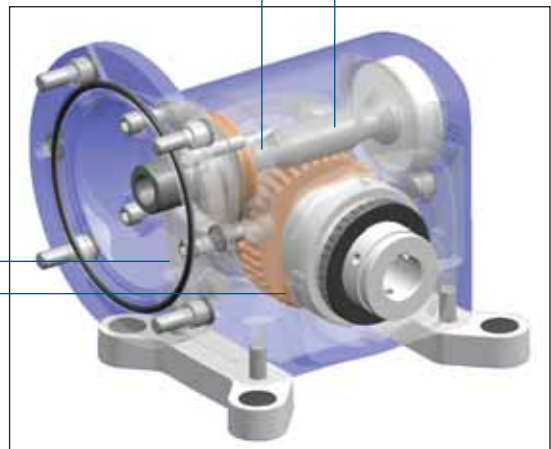
Two-piece mounting base maintains standard 700 Series footprint and enables the unit to be washed down without trapping foreign matter under the reducer

Integral input worm and shaft design made from high strength case hardened alloy steel

High pressure angle on worm provides greater operating efficiency

Large oil reservoir provides highly efficient heat dissipation and lubrication for longer operating life. Up to 20% more oil capacity than standard 700 series.

High strength bronze worm gear is straddle mounted between heavy-duty tapered roller bearings to increase thrust and overhung load capacities.



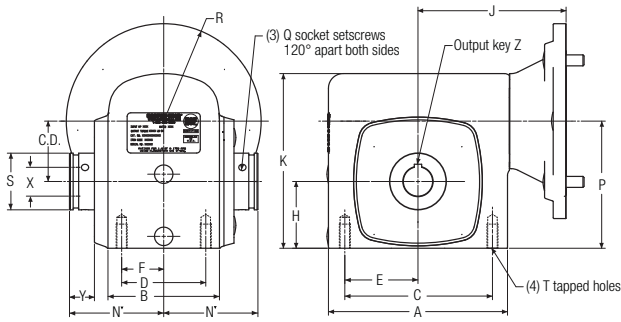
303 Stainless Steel output shafts



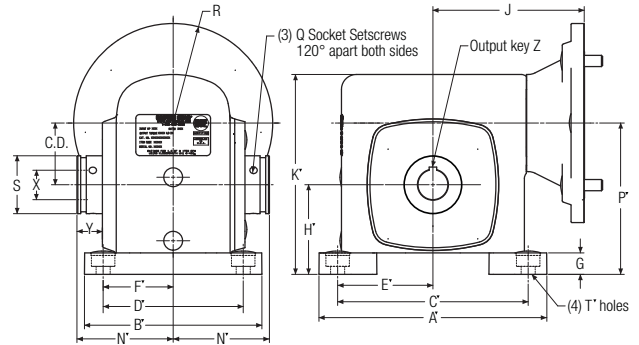
Available in hollow and solid output shafts

Dimensions

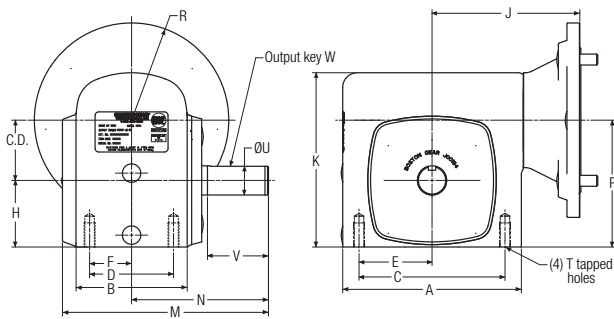
SSHF700 Hollow Shaft without Base



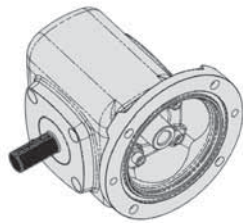
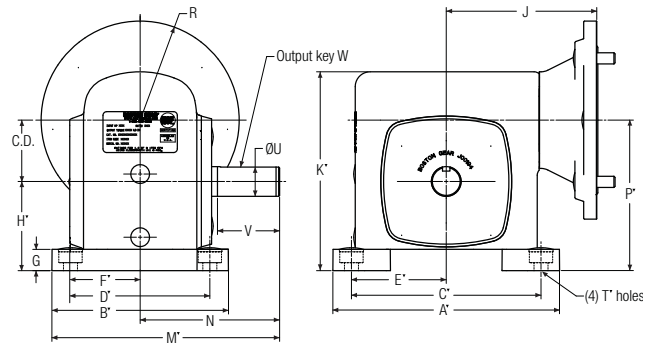
SSHF700 Hollow Shaft with Base



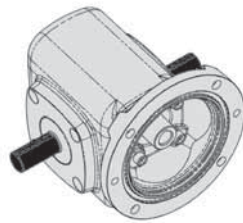
SSF700 GS Shaft without Base



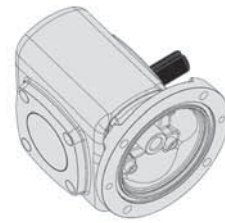
SSF700 GS Shaft with Base



GS



HS



JS

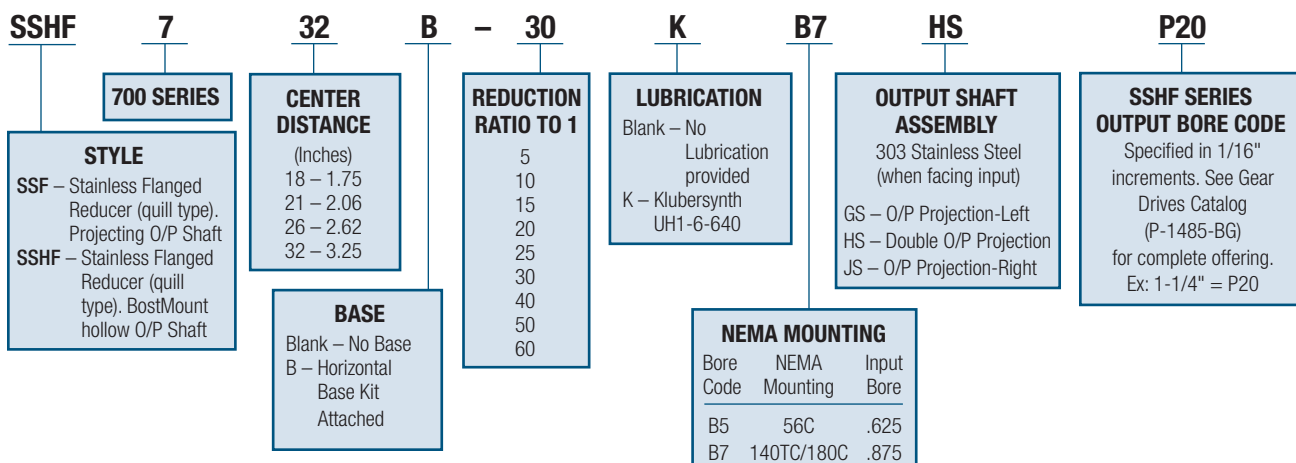
SIZE	C.D.	A	A'	B	B'	C	C'	D	D'	E	E'	F	F'
718	1.75	5.63	7.00	3.69	5.75	4.19	5.75	2.75	4.50	2.09	2.88	1.38	2.25
721	2.06	6.12	7.62	3.81	5.94	5.00	6.38	2.88	4.69	2.50	3.19	1.44	2.34
726	2.62	7.58	9.25	4.44	6.50	6.38	8.00	3.38	5.25	3.19	4.00	1.69	2.63
732	3.25	9.20	11.00	5.88	7.62	7.50	9.50	4.00	6.13	3.75	4.75	2.00	3.06

SIZE	G	H	H'	J	K	K'	M	M'	N	N'	P	P'	Q
718	0.69	2.06	2.75	4.69	5.31	6.00	6.74	7.19	4.31	3.03	3.81	4.50	#10-32
721	0.72	2.28	3.00	5.06	5.97	6.69	7.09	7.66	4.69	3.22	4.34	5.06	1/4-28
726	0.75	2.94	3.69	5.75	7.50	8.25	8.33	8.87	5.63	3.44	5.56	6.31	5/16-24
732	0.88	3.50	4.38	6.56	9.25	10.13	10.49	10.99	7.06	4.31	6.75	7.63	5/16-24

SIZE	R	S	T	T' C'Bore / Hole Dias.	U	V	W	X	Y	Approx Z SSF700	Approx Weight SSHF700	Approx Weight SSF700B	Approx Weight SSHF700B	Weight
718	3.33	1.38	5/16-18	.60/.41	0.875	1.78	3/16 x 1 lg	*	0.60	*	22	25	25	28
721	3.33	2.00	3/8-16	.78/.47	1.000	2.09	1/4 x 1-1/4 lg	*	0.82	*	27	30	30	33
726	3.33	2.50	3/8-16	.78/.53	1.125	2.63	1/4 x 1-15/16 lg	*	0.73	*	40	47	43.5	50.5
732	3.33	2.88	7/16-14	.78/.53	1.375	3.25	5/16 x 2-7/16	*	0.89	*	63	76	70	83

* Refer to H Series hollow output bore size chart in Gear Drive catalog P-1485-BG (#82545).

How To Order



Class I Service (Single Reduction 1.0 Service Factor)

Reducer Ratio	Output RPM	Input Horsepower @ 1750 RPM						
		1/4	1/3	1/2	3/4	1	1-1/2	2
5	350	718	718	718	718	718	718	718
10	175	718	718	718	718	718	718	721
15	117	718	718	718	718	718	721	726
20	88	718	718	718	718	718	726	726
25	70	718	718	718	718	721	726	726
30	58	718	718	718	721	721	726	732
40	44	718	718	718	721	726	732	732
50	35	718	718	721	726	726	732	
60	29	718	718	721	726	732	732	

Class II Service (Single Reduction 1.25 Service Factor)

Reducer Ratio	Output RPM	Input Horsepower @ 1750 RPM						
		1/4	1/3	1/2	3/4	1	1-1/2	2
5	350	718	718	718	718	718	718	718
10	175	718	718	718	718	718	721	726
15	117	718	718	718	718	721	726	726
20	88	718	718	718	718	721	726	732
25	70	718	718	718	721	726	726	732
30	58	718	718	718	721	726	732	732
40	44	718	718	721	726	726	732	
50	35	718	718	721	726	732		
60	29	718	721	726	732	732		

Class III Service (Single Reduction 1.75 Service Factor)

Reducer Ratio	Output RPM	Input Horsepower @ 1750 RPM						
		1/4	1/3	1/2	3/4	1	1-1/2	2
5	350	718	718	718	718	718	721	721
10	175	718	718	718	718	721	726	726
15	117	718	718	718	721	726	726	732
20	88	718	718	718	721	726	732	732
25	70	718	718	721	726	726	732	
30	58	718	718	721	726	732	732	
40	44	718	721	726	726	732		
50	35	718	721	726	732			
60	29	721	726	726	732			

Altra Industrial Motion

Warner Electric

Electromagnetic Clutches and Brakes - USA

South Beloit, IL
815-389-3771

For application assistance:
1-800-825-9050

Electromagnetic Clutches and Brakes - Europe

St Barthelemy d'Anjou, France
+33 (0)2 41 21 24 24

For sales office:
+33 (0)2 41 21 24 76

Precision Electric Coils and Electromagnetic Clutches and Brakes - USA

Columbia City, IN
260-244-6183

Inertia Dynamics

Spring Set Brakes; Power On and Wrap Spring Clutch/Brakes

New Hartford, CT
860-397-1252

Matrix International

Electromagnetic Clutches and Brakes, Pressure Operated Clutches and Brakes

Brechin, Scotland
+44 (0) 1356 602000

U.S.
815-389-3771

Warner Linear

Linear Actuators and Guideways - USA

Belvidere, IL
815-547-1106

For application assistance:
1-800-825-9050

TB Wood's

V-Belt Drives, Synchronous Drives, Flexible Couplings

Chambersburg, PA
717-264-7161

For assistance:
1-888-829-6637
Press #5 – Customer Service
Press #7 – Mechanical Applications
Press #8 – Electronic Application

Wichita Clutch and Industrial Clutch

Pneumatic and Oil Immersed Clutches and Brakes - USA

Wichita Falls, TX
940-723-3400

Pneumatic Clutches and Brakes - Europe

Bedford, England
+44 (0)1234 350311

Twiflex Limited

Caliper Brakes and Thrusters

Twickenham, England
+44 (0) 20 8894 1161

Formsprag Clutch

Overrunning Clutches and Holdbacks

Warren, MI
586-758-5000

For application assistance:
1-800-927-3262

Marland Clutch

Roller Ramp and Sprag Type Overrunning Clutches and Backstops

Burr Ridge, IL
630-455-1752

Stieber Clutch

Overrunning Clutches and Holdbacks

Heidelberg, Germany
+49 (0)6221 30 47 0

Boston Gear

Enclosed and Open Gearing, Electrical and Mechanical P.T. Components

Charlotte, NC
704-688-7300

For customer service:
1-800-825-6544

For application assistance:
1-800-816-5608

Huco Dynatork

Precision Couplings and Air Motors

Hertford, England
+44 (0) 1992 501900

U.S.
800-825-6544

Ameridrives Couplings

Gear Couplings, Mill Spindles, Universal Joints

Erie, PA
814-480-5000

Bibby Transmissions

Disc, Gear, Grid Couplings, Overload Clutches

Dewsbury, England
+44 (0) 1924 460801

Nuttall Gear and Delroyd Worm Gear

Worm Gear and Helical Speed Reducers

Niagara Falls, NY
716-298-4100

Saftek Friction

Non-asbestos Brake and Clutch Materials

Telford, England
+44 (0) 1952 581122

Altra Industrial Motion - Asia Pacific and Africa

China 852 2615 9313

Taiwan 886 2 2577 8156

Singapore 65 6487 4464

Thailand 66 2 322 5527

Australia 612 9894 0133

S. Africa 27 11 918 4270



Boston Gear

14 Hayward Street • Quincy, MA 02171
617-328-3300 • Fax 617-479-6238
www.bostongear.com